

1. Performance evaluation of pumps.
2. Static Magnetic Field Testing of Water Meters.
3. Testing of Various Flow Elements at AFL
4. A 2" Nozzle Functional Test & Performance test of 4" Valve at Large Water Flow Lab
5. Calibration of 1200mm USFM at Large Water Flow Laboratory

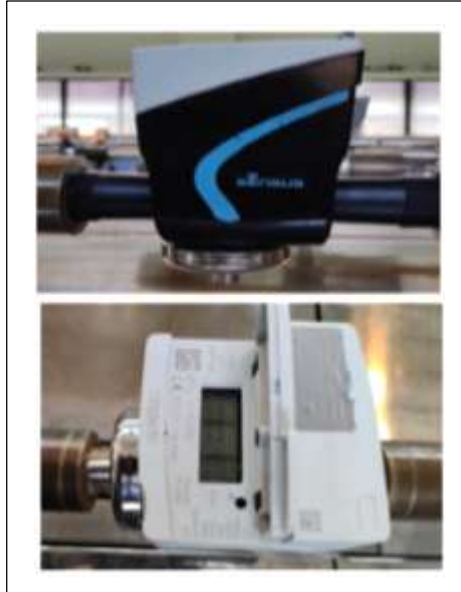
1. Performance evaluation of pumps

Discharge and pressure measurement of two 100 HP pumps in the pumping station of Kerala Water Authority, Pazhassi Dam, Mattannur, Kannur was performed at site. The pumps were of capacity 313 m³/h at 6.8 bar. Clamp-on ultrasonic flow meter was used as reference. Digital pressure transmitter was used for head measurement. The work was completed by Centre for Water Management, FCRI.



2. Static Magnetic Field Testing of Water Meters.

The effect of static magnetic field on performance of water meters were conducted in Centre for Water Management. The study was conducted in ultrasonic and electromagnetic water meters of various makes for Kerala Water Authority, Kochi.



Static Magnetic Field Testing of Water Meters

3. Testing of Various Flow Elements at AFL

Various Flow Elements were tested at AFL



Various Flow Elements being tested at AFL

4. A 2" Nozzle Functional Test & Performance test of 4" Valve at Large Water Flow Lab

A 2" Nozzle Functional Test & Performance test of 4" Valve were conducted at Large Water Flow Lab.



Performance test of 4" Valve

A 2" Nozzle Functional Test

5. Calibration of 1200mm USFM at Large Water Flow Laboratory

Calibration of 1200mm Ultra Sonic Flow Meters(USFM) were completed at Large Water Flow Laboratory of FCRI(52 nos)



Calibration of 1200mm USFM at LWFL

FLUID CONTROL RESEARCH INSTITUTE

(Under Ministry of Heavy Industries & Public Enterprises)
Kanjikode West, Palakkad – 678 623, Kerala, India
Tel: +91-491-2566120/206/2569009; Fax: +91-491-2566326,
Website: www.fcriindia.com